

INVS M4 Pro Series

Off Grid Energy Storage Inverter

3.6-5.6KW

Battery Optional

1kW=1kVA

Bluetooth



Product Snapshot

Model: 3.6KW/5.6KW

Nominal Voltage: 230VAC

Frequency Range: 50Hz/60Hz

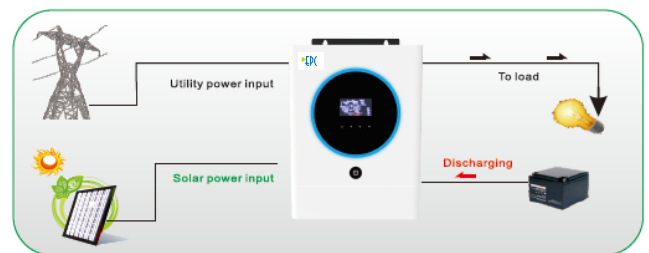
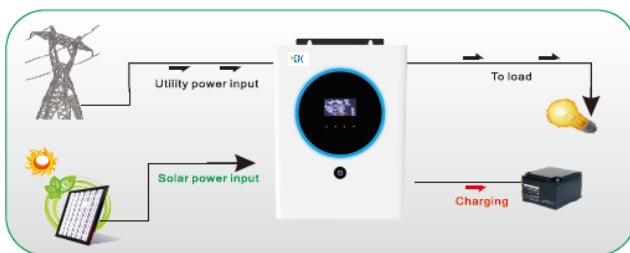
Key Features:

- Pure sine wave MPPT solar inverter
- High PV input voltage range
- Built-in 120A MPPT solar charger
- With Touch Buttons
- Built-in anti-dusk kit for harsh environment
- Support lithium iron battery
- Battery equalization function to optimize battery performance and extend lifecycle
- Reserved communication port (RS485, CAN-BUS or RS232) for BMS (Optional)

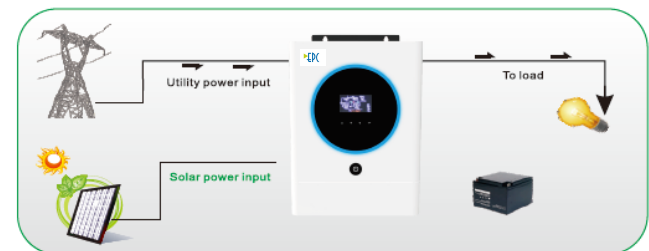
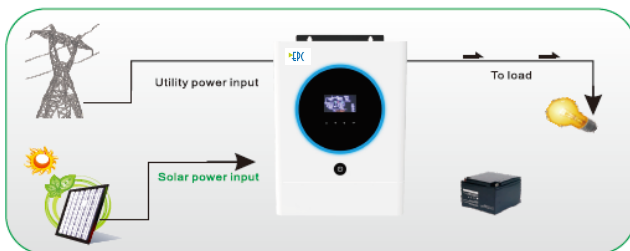


Hybrid Operation

With battery connected



Without battery connected



Features



Discharge current limit protection



Impact protection



Over temperature protection



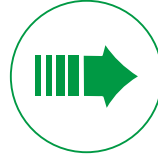
Low voltage protection



Overload protection



Short circuit protection



Overcurrent protection



High voltage protection

INVS M4 Pro Series

Wall Mounted Integrated Solar Inverter Technical Specification
Built-in MPPT Solar Controller

MODEL	INVS M4 Pro 3600-24	INVS M4 Pro 5600-48
Rated Power	3600VA/3600W	5600VA/5600W
INPUT		
Voltage	230 VAC	
Selectable Voltage Range	170-280 VAC (For Personal Computers) ; 90-280 VAC (For Home Appliances)	
Frequency Range	50 Hz/60 Hz (Auto sensing)	
OUTPUT		
AC Voltage Regulation (Batt. Mode)	230VAC \pm 5%	
Surge Power	7200VA	11200VA
Efficiency (Peak)	up to 93.5%	
Transfer Time	10 ms (For Personal Computers) ; 20 ms (For Home Appliances)	
Waveform	Pure sine wave	
BATTERY		
Battery Voltage	24 VDC	48 VDC
Floating Charge Voltage	27 VDC	54 VDC
Overcharge Protection	33 VDC	63 VDC
SOLAR CHARGER & AC CHARGER		
Maximum PV Array Open Circuit Voltage	500 VDC	500 VDC
Maximum PV Array Power	4500W	6000W
MPPT Range @ Operating Voltage	120~450 VDC	120~450 VDC
Maximum Solar Charge Current	120A	120A
Maximum AC Charge Current	100A	100A
Maximum Charge Current	120A	120A
PHYSICAL		
Dimension, D x W x H (mm)	400*300*115	400*300*115
Net Weight (kgs)	8.5	9
Communication Interface	USB/RS232	
ENVIRONMENT		
Humidity	5% to 95% Relative Humidity (Non-condensing)	
Operating Temperature	-10°C to 50°C	
Storage Temperature	-15°C to 60°C	

Note: Product specifications are subject to change without further notice.