

MODULAR RECTIFIER

SDM SERIES | MODULAR RECTIFIER / BATTERY CHARGER

Circuit of the rectifier modules have two part, one is PFC adjust; the other is DC/DC transformation.

All technically make the wide input voltage range (65V-290V).

High efficiency rectifier modules used soft switch technology white load rate 10% then efficiency can be above 91%, 50% load rate the efficiency can be above 95%

With stepless current limiter technology, output current is continuously adjustable. Adopted stepless temperature control speed, it can reduce power consumption and prolong the life of the fan.

Sharing Load, Equalized-current imbalance s 3%.

Optional Ethernet interface through SNMP and/or TCO/IP. Controller MCU.

Digital signal collection via internet RS485 bus; RS232 interface for remote operation.

2U height, light weight, high power density.

Output load shunt have functions of short-circuit and over-current protection. Shunt capacity can be adjusted accorging to user requirements

Battery input with fuse breaker of MCB, has functions of short circuit, over- current protection and alarm. Fault condition can be detected.

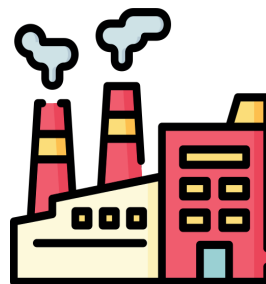
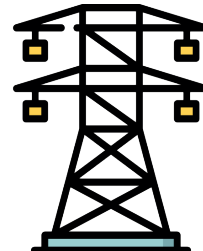
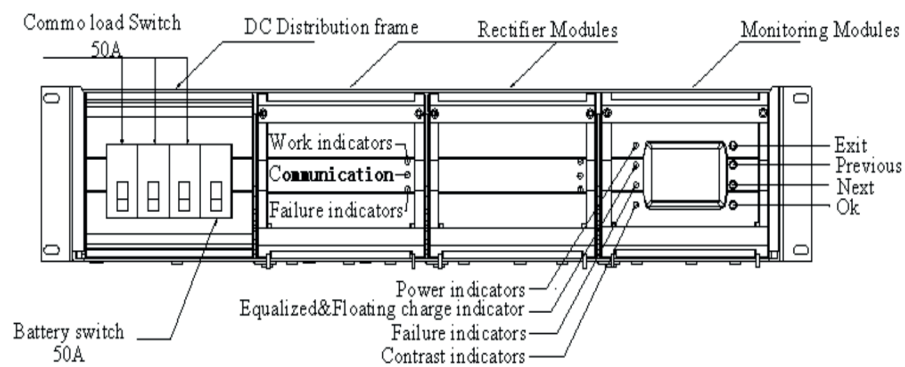
The software is easy and safe to operaté.

Parameter settings is comprehensive and detailed, such as low machine time setting, Temperature compensation settging, overvoltage - undervoltage setting, recovery voltage etc.



SDM SERIES | MODULAR RECTIFIER / BATTERY CHARGER

MODEL	SDM-4815	SDM-4820	SDM-4830	SDM-4840	SDM-4850
Input Voltage (AC)	85V 290V				
Output Voltage (AC)	48V (42V - 59V Continuously Adjustable)				
Output Current	15A	20A	30A	40A	50A
Max. Power(W)	800W	1000W	1600W	2300W	2900W
Operating Temperature	-25°C ~ 65°C				
Relative Humidity	≤97% RH				
Load Regulation	≤0.5%				
Voltage Regulation	≤0.10%				
Dimenson (H*W*D)	103*261*88				
Weight	2.6KG				



Note: Product properties may change without a notice by EPC.